

NEST

Non-combustible
internal insulation !



Innovation for
performance and comfort!

NEST



INTERNAL INSULATION

High-density blanket

- ✓ Summer / Winter insulation
- ✓ Easy to install
- ✓ Non-combustible



Non-combustible



Vapour control layer



Easy to cut, screw, nail and staple

TECHNICAL DATAS

| | |
|--------------------|----------------------------------|
| Résistance | Sd : > 4 000 m (20 000 MNs/g) |
| Fire rating | Non-combustible A1 |
| Sound reduction | -13 dB (product alone) |
| Thickness | 6 mm |
| Mass density | 830 g/m ² |

THERMAL DATAS

| | |
|---|---|
| Reflectivity / Emissivity | 97% / 3% |
| Thermal resistance according to EN 16012 | with 2 air gaps : 1,55 m².K/W with 1 air gap : 0,89 m².K/W |
| Thermal conductivity (λ) | 0,028 W/mK |

PACKAGING

| | |
|------------|----------------------------------|
| Dimensions | 1 m x 25 ml (25 m ²) |
| Weight | 21 kg |



Vapour control layer
compliant with EN 13984.



Insulation
tested in compliance with EN 16012.

Space saving ! Money saving !

REDUCES THE UNDERSIDE INSULATION

ADDITIONAL INSULATION THICKNESS WITH 2 AIR GAPS ⁽¹⁾

160 mm = R>6 for converted attic space
80 mm = R>3,7 for internal walls
220 mm = R>7 for ceilings in unused attic space

⁽¹⁾ Additional insulation whose thermal conductivity is equal to 0.035 W/mK.



Information on indoor air emission levels of volatile substances, with a risk of toxicity by inhalation, on a class scale ranging from A+ (very low emissions) to C (high emissions).

Overlappings: REFLEXBOND XL adhesive tape



- ✓ Repositionable
- ✓ UV-resistant
- ✓ Guarantees the fire rating
- ✓ Easy to cut
- ✓ Applicable under wet conditions



Example

WALL AND ATTIC INSULATION



Company :
POLO COMMERCE

Applied Quantity : 300 m²

Why choosing NEST ?

«For the renovation of this chalet facing south, summer and winter comfort was essential. The available space for insulation was however limited. I suggested to combine NEST with wood fiber in order to deal with the insulation in a comprehensive way. Easy to install, NEST allowed me to save time and to offer an effective solution by keeping beautiful volumes.»

Benefits



- ✓ NEST 2-in-1 insulation achieves the function of both high-density insulation and reflective vapour barrier.
- ✓ NEST flexibility ensures the continuity of the insulation between the walls and the roof pitches.
- ✓ NEST combines perfectly with all types of insulation by preserving them from moisture.



Particular points



Can be installed alone or with an underside insulation.



Reduces the joineries strengthening.



Easy to cut: facilitates the running of ducts and prevents air leaks.



Preserves beautiful ceiling heights.



Adaptable: ideal for attic space conversion.

To know

INDOOR APPLICATION

Applications :

NEST can be applied as a vapour barrier or a thin insulation for internal insulation works in new-build or renovation projects. NEST insulation can be installed under plaster boards, plastered bricks, wood panelling or PVC.

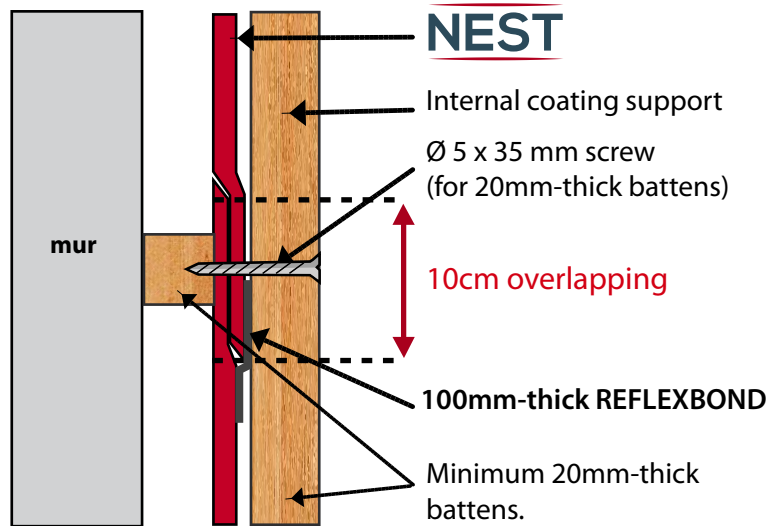
Installation :

NEST must be laid tightly on a 20 mm-thick wood or metal frame. An air gap must be created on each side of the product. The strips are to be unwound horizontally starting from the bottom.

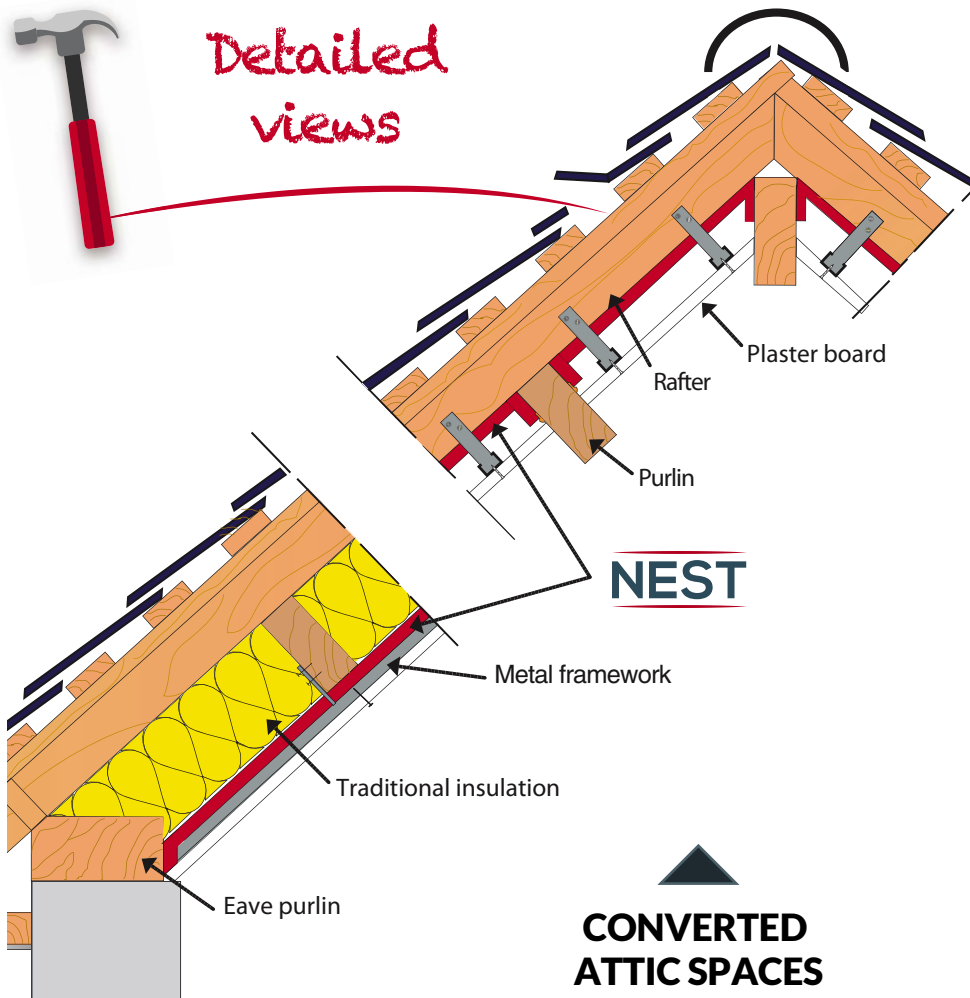
Installation



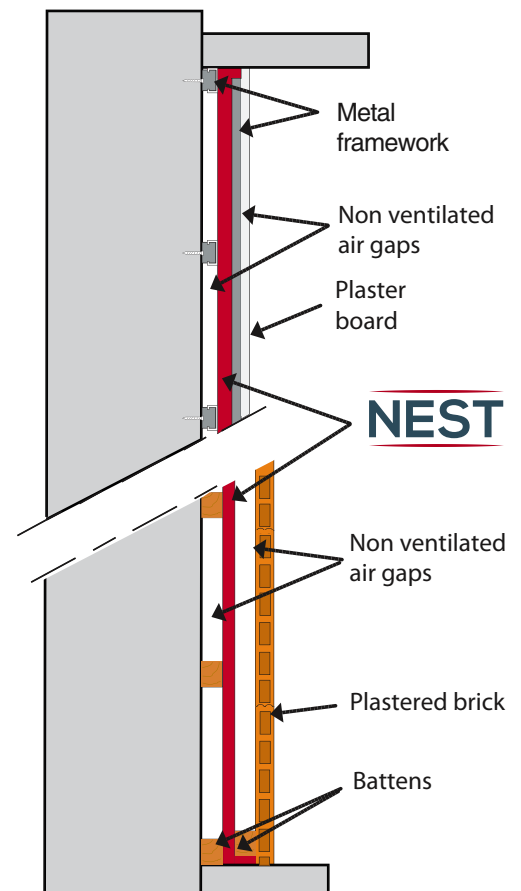
- ✓ NEST can be used on supports with a maximum distance of 60 cm.
- ✓ NEST is attached with flat-head nails on the support. Permanent fastening is achieved thanks to the frame receiving the final support.
- ✓ To avoid oxidation by electrolytic reaction, avoid direct contact of aluminum with copper, brass and lead.



Detailed views



VERTICAL WALLS





Benefits

High insulation properties

Low thickness

High-density fiberglass blanket

Consisted exclusively of mineral materials

Vapour barrier compliant with regulatory standards



Outcomes

- ✓ Winter/ summer comfort
Average gain of 3 °C in winter and 7 °C in summer
- ✓ 35% average energy savings

- ✓ - 46% on the additional insulation thickness
- ✓ +10% of floor space compared to a traditional solution
- ✓ Possibility of exposed beams

- ✓ Easy installation: can be cut, screwed or to stapled
- ✓ High insulation value (λ : 0.028 W/mK)

- ✓ Non-combustible: safety for goods and people
- ✓ No compaction: keeps its insulating properties
- ✓ Pure aluminum: keeps its reflectivity

- ✓ Compatible with all the insulation materials (glass wool, rock wool, wood wool, linen wool, etc...)

Request a sample from
our customer service
+33 (0)2 96 78 24 22
contact@winco-tech.com

NEST

NEST allows my customers to achieve substantial energy savings.

TRUE!

Our customers notice a 35% reduction on average of their energy bill from year one. Ideal for renovation projects, NEST prevents moisture from penetrating the insulation by forming a real barrier against water vapour.

NEST thermal resistance can not be combined with that of another insulation product.

FALSE!

Thanks to NEST, you benefit from a thermal resistance of $1.55\text{m}^2\text{K/W}$ with 2 air gaps. NEST can be coupled with an insulation of $4.45\text{m}^2\text{K/W}$ to obtain $6\text{m}^2\text{K/W}$.

NEST acts on insulation in a comprehensive way.

TRUE!

In dealing with insulation thanks to NEST, you form a complete, reflective and tight envelope which guarantees a fast return on investment.

