

nest

INSIDE
INSULATION



The best non-combustible reflective insulation for your projects

λ 0.028
W/mK

INSULATION

ATTIC SPACES
EXTENSIONS - RENOVATION
FLATS - LOFTS
GARAGES - MOBIL HOMES



NEST, burning characteristics.

nest

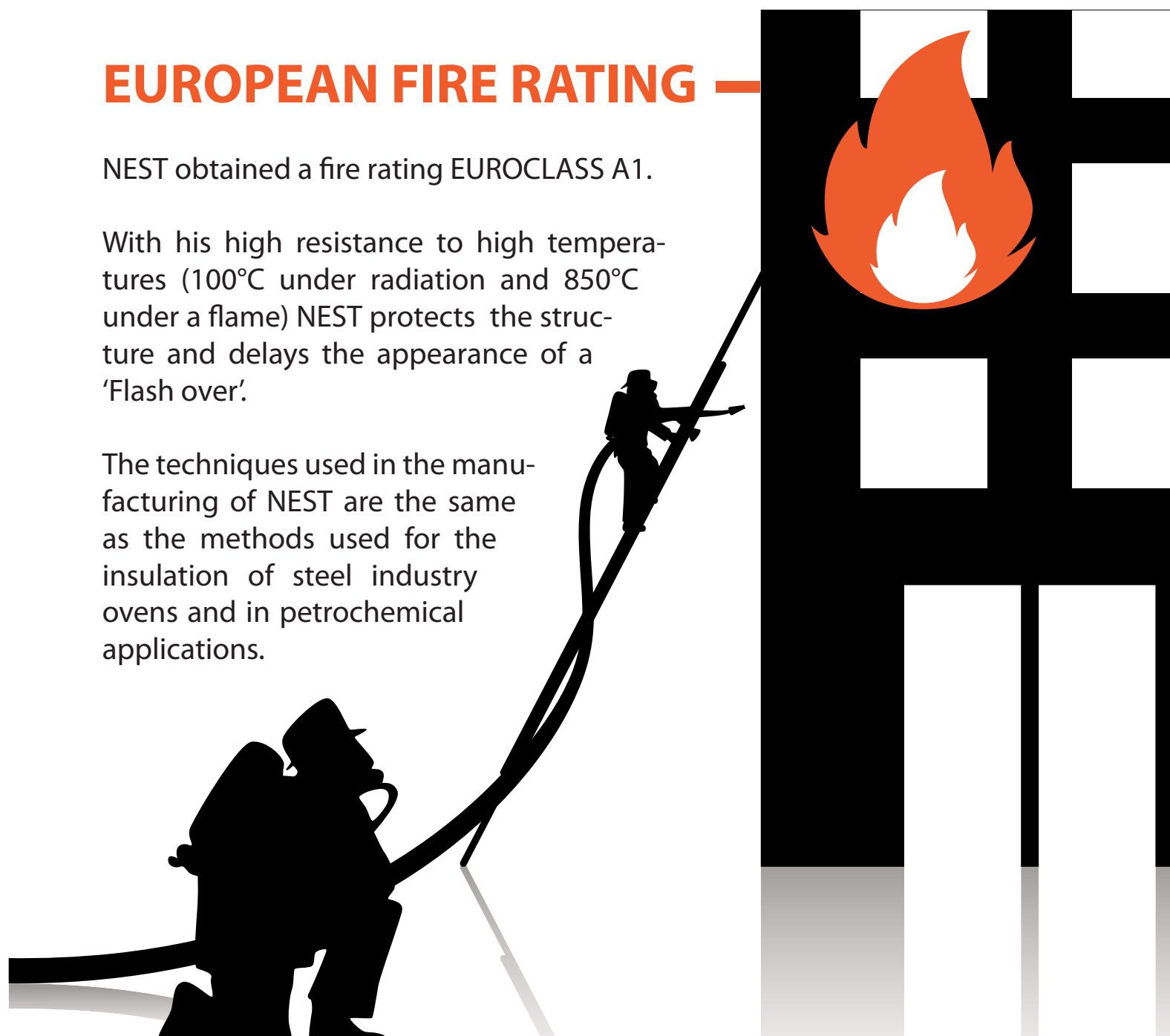


EUROPEAN FIRE RATING —

NEST obtained a fire rating EUROCLASS A1.

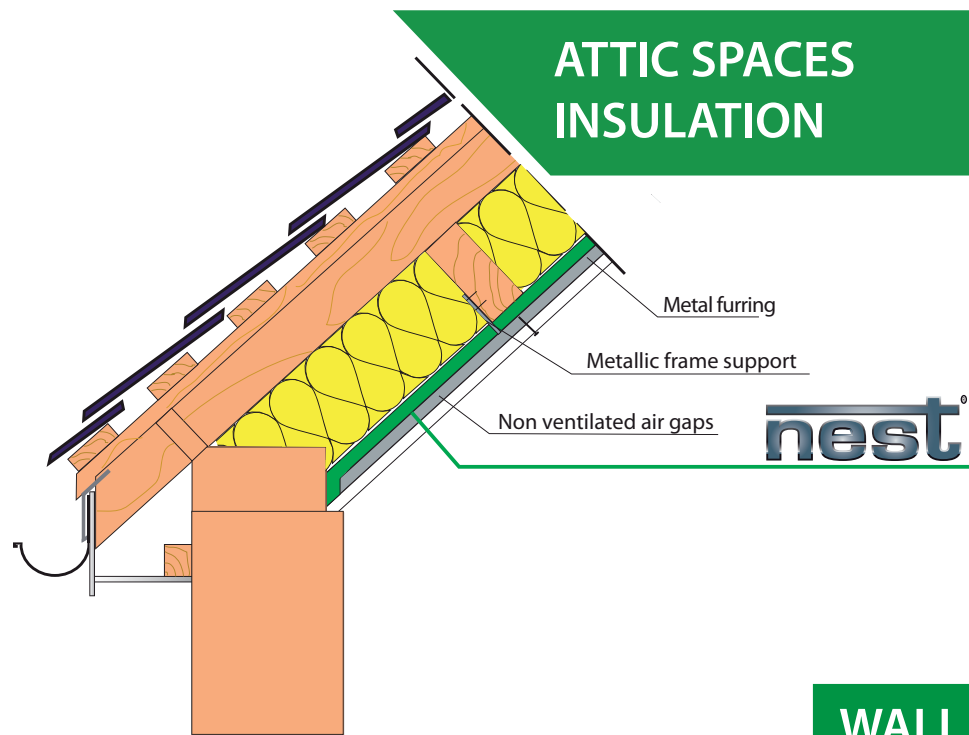
With his high resistance to high temperatures (100°C under radiation and 850°C under a flame) NEST protects the structure and delays the appearance of a 'Flash over'.

The techniques used in the manufacturing of NEST are the same as the methods used for the insulation of steel industry ovens and in petrochemical applications.

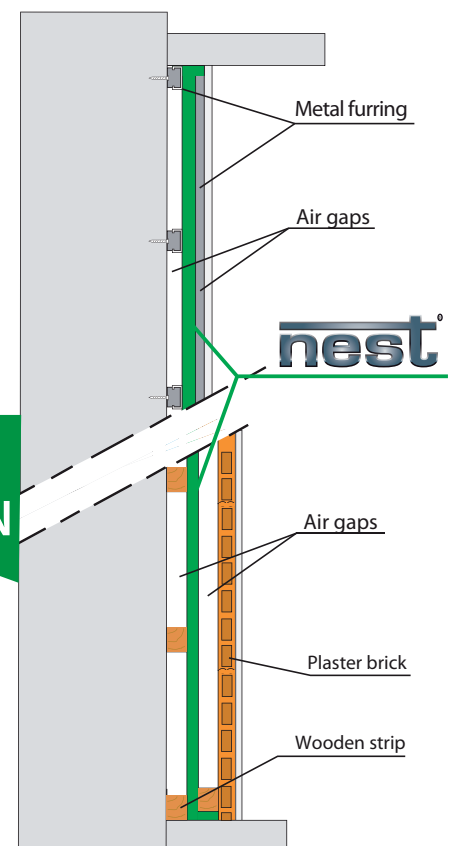


The new way to insulate a building.

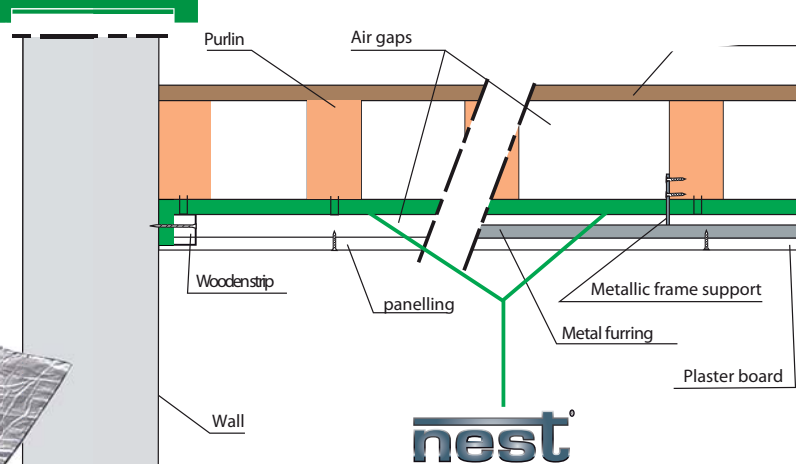
ATTIC SPACES INSULATION



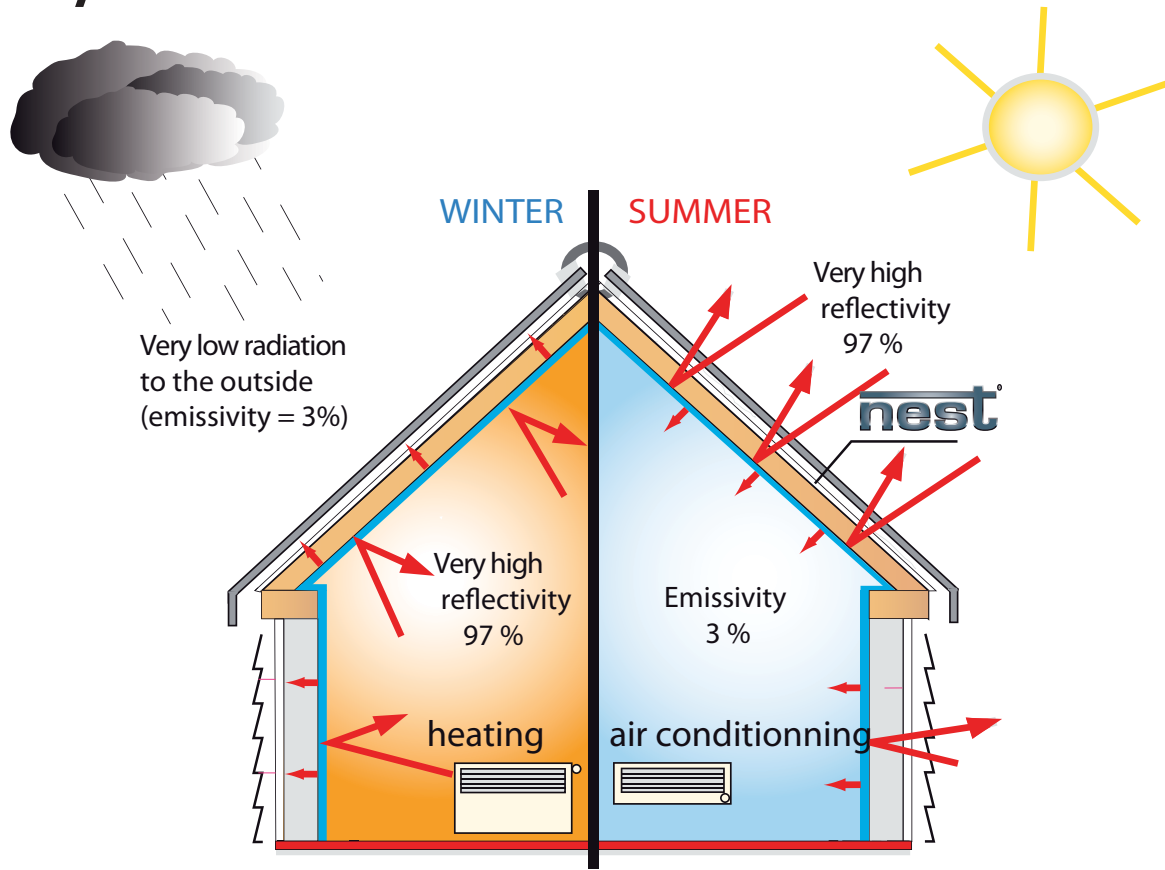
WALL INSULATION



FLOOR INSULATION



NEST, inside summer / winter insulation.



In winter,

NEST will reflect back up to 97% of the radiant heat that tries to escape a building. **NEST** with its unique insulation blanket and pure aluminum foil also provides a continuous airtight and vapor barrier that highly contributes to energy savings.

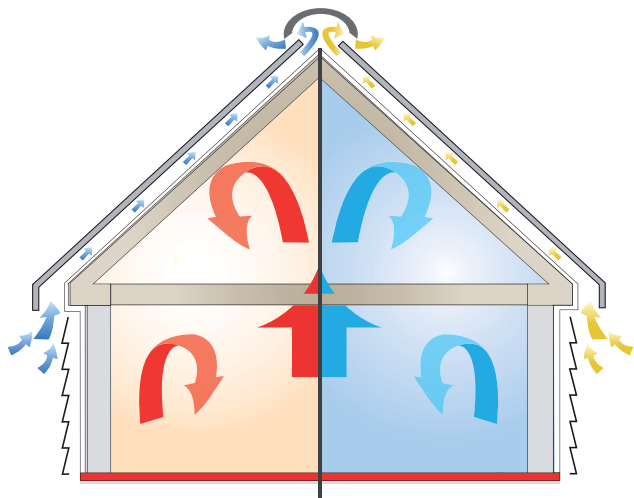


In summer,

Sun is the primary source of energy that heats a building, and this heat is radiated into the interior. **NEST** is a superior reflective insulation that **reflects up to 97% of the sun radiant** heat preventing building overheating.



NEST, easy and efficient solution to achieve savings energy.

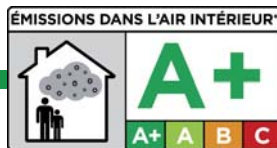


**REFLECTIVE INSULATION
WITH LOW EMISSIVITY**



Pure aluminium:

Thanks to its pure aluminium coating on each side, NEST keeps its 97% reflection ability over time, unlike the aluminium-sprayed products that deteriorate under the effect of heat.



WINCO *technologies*

ZI des Châtelets - 8 rue du Boisillon

22950 TREGUEUX - France

Tél. +33 (0)2 96 78 79 80 - Fax : +33 (0)2 96 78 65 67

contact@winco-tech.com

Technical sheet

NEST

| | |
|---------------|--|
| Composition | <ul style="list-style-type: none"> • Pure aluminum foil • High density blanket made with continuous E glass filaments. • Pure aluminum foil |
| Thickness | 6 mm |
| Roll size | 1m x 25 mL (25 m ²) |
| Density | 830 g/m ² |
| Packaging | 6 rolls / box - 2 boxes / pallet |
| Roll weight | 21 Kg |
| Roll Diameter | 400 mm |

Physical datas

| | |
|---------------------------|------------------------|
| Emissivity / Reflectivity | 0,03 / 97% |
| Thermal conductivity | λ : 0,028 W/mK |

Mechanical datas

| | |
|-------------|------------------------------------|
| Fire rating | Euroclass A1 (Noncombustible) - M0 |
|-------------|------------------------------------|

Accessories

| | |
|------------------------|-------------------|
| Adhesive aluminum tape | REFLEXBOND 100 mm |
|------------------------|-------------------|

